



nousun keli

Oil Per Board: 40 uL Oil Pattern Distance: 38 Feet Volume Oil Total: 20.44 mL Total Boards Crossed: 511 Boards

Forward Oil Total: 11.48 mL
Forward Boards Crossed: 287 Boards

Reverse Oil Total: 8.96 mL
Reverse Boards Crossed: 224 Boards

HIGH STREET - 8144 At 44 feet in length, the oil line is very high and extends far down lane giving hold area like no other pattern in the series. Players will have to target along the highest point of oil much longer to prosper on the HIGH STREET.

	Start	Stop	Loads	Speed	Crossed	Start	End	Feet	T.Oil
1	2L	2R	3	10	111	0.0	2.8	2.8	4440
2	8L	8R	2	14	50	2.8	6.7	3.9	2000
3	9L	9R	2	18	46	6.7	11.8	5.1	1840
4	10L	10R	2	18	42	11.8	16.9	5.1	1680
5	11L	11R	2	18	38	16.9	22.0	5.1	1520
6	2L	2R	0	22	0	22.0	38.0	16.0	0

	Start	Stop	Loads	Speed	Crossed	Start	End	Feet	T.Oil
1	2L	2R	0	26	0	38.0	33.0	-5.0	0
2	11L	11R	3	18	57	33.0	25.4	-7.6	2280
3	10L	10R	2	18	42	25.4	20.3	-5.1	1680
4	10L	10R	2	18	42	20.3	15.2	-5.1	1680
5	9L	9R	2	18	46	15.2	10.1	-5.1	1840
6	2L	2R	1	14	37	10.1	8.2	-1.9	1480
7	2L	2R	0	14	0	8.2	0.0	-8.2	0

Conditioner:
Type In or Select One

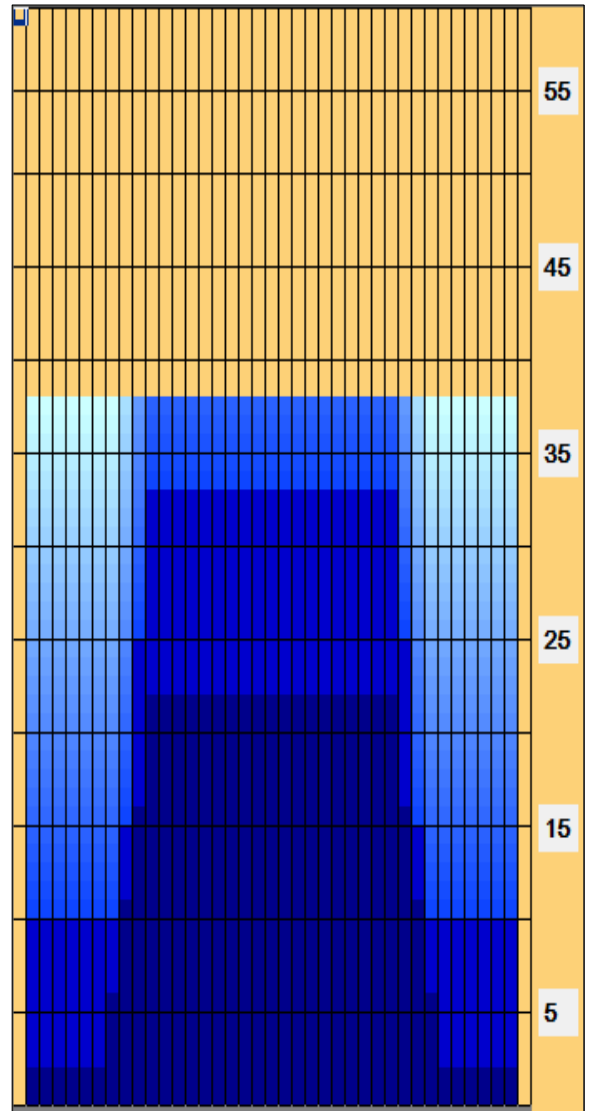
TransferType:
Type In or Select One

Forward

Reverse

Combined

Buff



Arrow Zone Ratios

Item	2-5L:16L-20	6-10L:16-20	11-15L:16L-20	16L-20:20-16R	16L-20:20-16R	20-16R:15-11R	20-16R:10-6R	20-16R:5-2R
ul Arrow	160	320	840	840	840	840	320	160
Zone Ratio	5.25	2.63	1	1	1	1	2.63	5.25

Track Zone Ratios

Item	3L-7L:18L-18R	8L-12L:18L-18R	13L-17L:18L-18R	18L-18R:17R-13R	18L-18R:12R-8R	18L-18R:7R-3R
Description	Outside Track:Middle	Middle Track:Middle	Inside Track:Middle	Middle: Inside Track	Middle:Middle Track	Middle:Outside Track
Track Zone Ratio	5.25	1.42	1	1	1.42	5.25

