



# Hilimojen kesäkisa 2013

Oil Per Board: 50 uL      Oil Pattern Distance: 39 Feet      Volume Oil Total: 21.65 mL      Total Boards Crossed: 433 Boards

Forward Oil Total: 13.75 mL  
Forward Boards Crossed: 275 Boards

Reverse Oil Total: 7.9 mL  
Reverse Boards Crossed: 158 Boards

TRANSFER BRUSH SYSTEM

Conditioner:  
Type In or Select One

TransferType:  
Type In or Select One

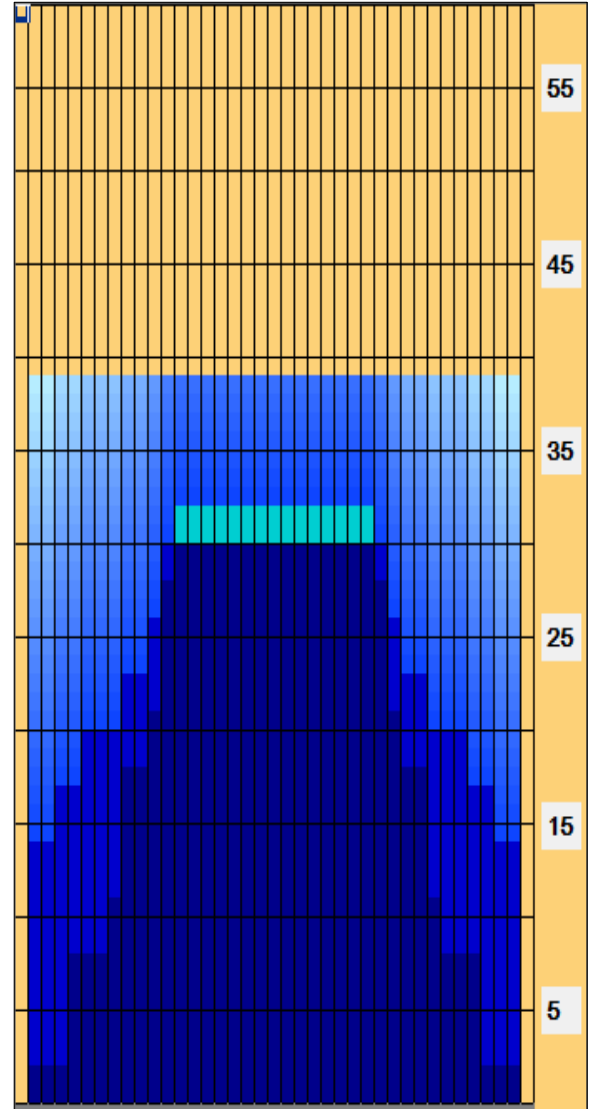
|   | Start | Stop | Loads | Speed | Crossed | Start | End  | Feet | T.Oil |
|---|-------|------|-------|-------|---------|-------|------|------|-------|
| 1 | 2L    | 2R   | 2     | 18    | 74      | 0.0   | 2.5  | 2.5  | 3700  |
| 2 | 5L    | 5R   | 2     | 22    | 62      | 2.5   | 8.7  | 6.2  | 3100  |
| 3 | 8L    | 8R   | 1     | 22    | 25      | 8.7   | 11.8 | 3.1  | 1250  |
| 4 | 9L    | 9R   | 2     | 22    | 46      | 11.8  | 18.0 | 6.2  | 2300  |
| 5 | 11L   | 11R  | 1     | 26    | 19      | 18.0  | 21.6 | 3.6  | 950   |
| 6 | 12L   | 12R  | 2     | 26    | 34      | 21.6  | 28.9 | 7.3  | 1700  |
| 7 | 13L   | 13R  | 1     | 26    | 15      | 28.9  | 32.5 | 3.6  | 750   |
| 8 | 2L    | 2R   | 0     | 22    | 0       | 32.5  | 39.0 | 6.5  | 0     |

Forward

Reverse

Combined

Buff



|   | Start | Stop | Loads | Speed | Crossed | Start | End  | Feet  | T.Oil |
|---|-------|------|-------|-------|---------|-------|------|-------|-------|
| 1 | 2L    | 2R   | 0     | 30    | 0       | 39.0  | 30.0 | -9.0  | 0     |
| 2 | 12L   | 12R  | 1     | 26    | 17      | 30.0  | 26.4 | -3.6  | 850   |
| 3 | 11L   | 11R  | 1     | 26    | 19      | 26.4  | 22.8 | -3.6  | 950   |
| 4 | 9L    | 9R   | 1     | 22    | 23      | 22.8  | 19.7 | -3.1  | 1150  |
| 5 | 6L    | 6R   | 1     | 22    | 29      | 19.7  | 16.6 | -3.1  | 1450  |
| 6 | 4L    | 4R   | 1     | 22    | 33      | 16.6  | 13.5 | -3.1  | 1650  |
| 7 | 2L    | 2R   | 1     | 18    | 37      | 13.5  | 11.0 | -2.5  | 1850  |
| 8 | 2L    | 2R   | 0     | 18    | 0       | 11.0  | 0.0  | -11.0 | 0     |

Arrow Zone Ratios

| Item       | 2-5L:16L-20 | 6-10L:16-20 | 11-15L:16L-20 | 16L-20:20-16R | 16L-20:20-16R | 20-16R:15-11R | 20-16R:10-6R | 20-16R:5-2R |
|------------|-------------|-------------|---------------|---------------|---------------|---------------|--------------|-------------|
| ul Arrow   | 200         | 440         | 800           | 850           | 850           | 800           | 440          | 200         |
| Zone Ratio | 4.25        | 1.93        | 1.06          | 1             | 1             | 1.06          | 1.93         | 4.25        |

Track Zone Ratios

| Item             | 3L-7L:18L-18R        | 8L-12L:18L-18R      | 13L-17L:18L-18R     | 18L-18R:17R-13R      | 18L-18R:12R-8R      | 18L-18R:7R-3R        |
|------------------|----------------------|---------------------|---------------------|----------------------|---------------------|----------------------|
| Description      | Outside Track:Middle | Middle Track:Middle | Inside Track:Middle | Middle: Inside Track | Middle:Middle Track | Middle:Outside Track |
| Track Zone Ratio | 3.15                 | 1.44                | 1                   | 1                    | 1.44                | 3.15                 |

