



Rojjaaksen Kesäkimara 2025

Oil Per Board: 50 uL

Oil Pattern Distance: 39 Feet

Volume Oil Total: 22.4 mL

Total Boards Crossed: 448 Boards

Forward Oil Total: 12.8 mL

Forward Boards Crossed: 256 Boards

Reverse Oil Total:

9.6 mL

Reverse Boards Crossed:

192 Boards

Kegel Fre

	Start	Stop	Loads	Speed	Crossed	Start	End	Feet	T.Oil
1	2L	2R	2	18	74	0.0	2.5	2.5	3700
2	10L	10R	4	18	84	2.5	12.7	10.2	4200
3	11L	11R	2	18	38	12.7	17.8	5.1	1900
4	13L	13R	4	18	60	17.8	28.0	10.2	3000
5	2L	2R	0	22	0	28.0	33.0	5.0	0
6	2L	2R	0	30	0	33.0	39.0	6.0	0

Forward Reverse More Info

	Start	Stop	Loads	Speed	Crossed	Start	End	Feet	T.Oil
1	2L	2R	0	30	0	39.0	33.0	-6.0	0
2	14L	14R	2	18	26	33.0	27.9	-5.1	1300
3	13L	13R	4	18	60	27.9	17.7	-10.2	3000
4	12L	12R	4	14	68	17.7	9.8	-7.9	3400
5	11L	11R	2	14	38	9.8	5.9	-3.9	1900
6	2L	2R	0	14	0	5.9	0.0	-5.9	0

Forward Reverse More Info

Conditioner:
Type In or Select
One

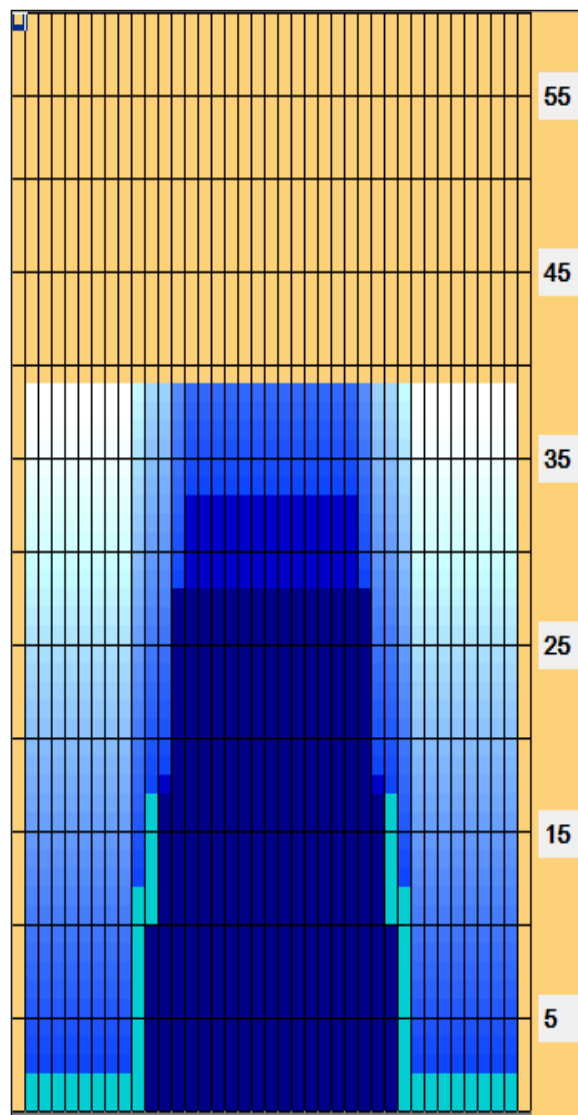
TransferType:
Type In or
Select One

Forward

Reverse

Combined

Buff



Arrow Zone
Ratios

Item	2-5L:16L-20	6-10L:16L-20	11-15L:16L-20	16L-20:20-16R	16L-20:20-16R	20-16R:15-11R	20-16R:10-6R	20-16R:5-2R
ul Arrow	100	140	940	1200	1200	940	140	100
Zone Ratio	12	8.57	1.28	1	1	1.28	8.57	12

Track Zone
Ratios

Item	3L-7L:18L-18R	8L-12L:18L-18R	13L-17L:18L-18R	18L-18R:17R-13R	18L-18R:12R-8R	18L-18R:7R-3R
Description	Outside Track:Middle	Middle Track:Middle	Inside Track:Middle	Middle: Inside Track	Middle:Middle Track	Middle:Outside Track
Track Zone Ratio	12	3.53	1.02	1.02	3.53	12

