



Sandels Open 2012

Oil Per Board: 40 uL Oil Pattern Distance: 41 Feet Volume Oil Total: 21.16 mL Total Boards Crossed: 529 Boards

Forward Oil Total: 12.96 mL
Forward Boards Crossed: 324 Boards

Reverse Oil Total: 8.2 mL
Reverse Boards Crossed: 205 Boards

Notes

	Start	Stop	Loads	Speed	Crossed	Start	End	Feet	T.Oil
1	2L	2R	3	10	111	0.0	2.8	2.8	4440
2	9L	9R	3	10	69	2.8	7.0	4.2	2760
3	10L	10R	2	10	42	7.0	9.8	2.8	1680
4	11L	11R	2	10	38	9.8	12.6	2.8	1520
5	12L	12R	2	10	34	12.6	15.4	2.8	1360
6	13L	13R	2	10	30	15.4	18.2	2.8	1200
7	2L	2R	0	18	0	18.2	31.0	12.8	0
8	2L	2R	0	30	0	31.0	41.0	10.0	0

	Start	Stop	Loads	Speed	Crossed	Start	End	Feet	T.Oil
1	2L	2R	0	30	0	41.0	32.0	-9.0	0
2	13L	13R	3	18	45	32.0	24.4	-7.6	1800
3	12L	12R	2	18	34	24.4	19.3	-5.1	1360
4	11L	11R	2	18	38	19.3	14.2	-5.1	1520
5	10L	10R	2	18	42	14.2	9.1	-5.1	1680
6	9L	9R	2	14	46	9.1	5.2	-3.9	1840
7	2L	2R	0	10	0	5.2	0.0	-5.2	0

Conditioner:
Type In or Select One

TransferType:
Type In or Select One

Forward



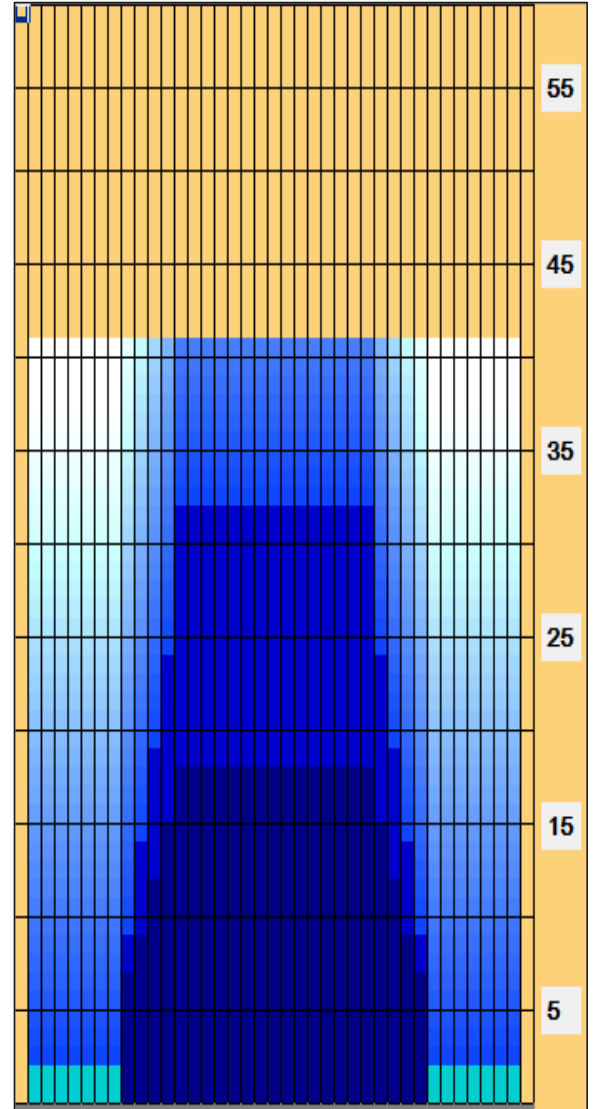
Reverse



Combined



Buff



Arrow Zone Ratios

Item	2-5L:16L-20	6-10L:16-20	11-15L:16L-20	16L-20:20-16R	16L-20:20-16R	20-16R:15-11R	20-16R:10-6R	20-16R:5-2R
ul Arrow	120	232	888	1000	1000	888	232	120
Zone Ratio	8.33	4.31	1.13	1	1	1.13	4.31	8.33

Track Zone Ratios

Item	3L-7L:18L-18R	8L-12L:18L-18R	13L-17L:18L-18R	18L-18R:17R-13R	18L-18R:12R-8R	18L-18R:7R-3R
Description	Outside Track:Middle	Middle Track:Middle	Inside Track:Middle	Middle: Inside Track	Middle:Middle Track	Middle:Outside Track
Track Zone Ratio	8.33	2.12	1	1	2.12	8.33

