



Veljmiehet Open 2012

Oil Per Board: 40 uL Oil Pattern Distance: 40 Feet Volume Oil Total: 22.32 mL Total Boards Crossed: 558 Boards

Forward Oil Total: 11.44 mL
Forward Boards Crossed: 286 Boards

Reverse Oil Total: 10.88 mL
Reverse Boards Crossed: 272 Boards

Pattern Distance: 40 Feet

	Start	Stop	Loads	Speed	Crossed	Start	End	Feet	T.Oil
1	2L	2R	3	10	111	0.0	2.8	2.8	4440
2	8L	8R	1	14	25	2.8	4.7	1.9	1000
3	9L	9R	1	14	23	4.7	6.6	1.9	920
4	10L	10R	2	14	42	6.6	10.5	3.9	1680
5	11L	11R	2	18	38	10.5	15.6	5.1	1520
6	12L	12R	1	18	17	15.6	18.1	2.5	680
7	13L	13R	2	18	30	18.1	23.2	5.1	1200
8	2L	2R	0	22	0	23.2	32.0	8.8	0
9	2L	2R	0	30	0	32.0	40.0	8.0	0

Forward Reverse More Info

	Start	Stop	Loads	Speed	Crossed	Start	End	Feet	T.Oil
1	2L	2R	0	30	0	40.0	33.0	-7.0	0
2	13L	13R	2	18	30	33.0	27.9	-5.1	1200
3	12L	12R	3	14	51	27.9	22.0	-5.9	2040
4	11L	11R	3	14	57	22.0	16.1	-5.9	2280
5	10L	10R	3	14	63	16.1	10.2	-5.9	2520
6	9L	9R	2	10	46	10.2	7.4	-2.8	1840
7	8L	8R	1	10	25	7.4	6.0	-1.4	1000
8	2L	2R	0	10	0	6.0	0.0	-6.0	0

Forward Reverse More Info

Conditioner:
Type In or Select One

TransferType:
Type In or Select One

Forward



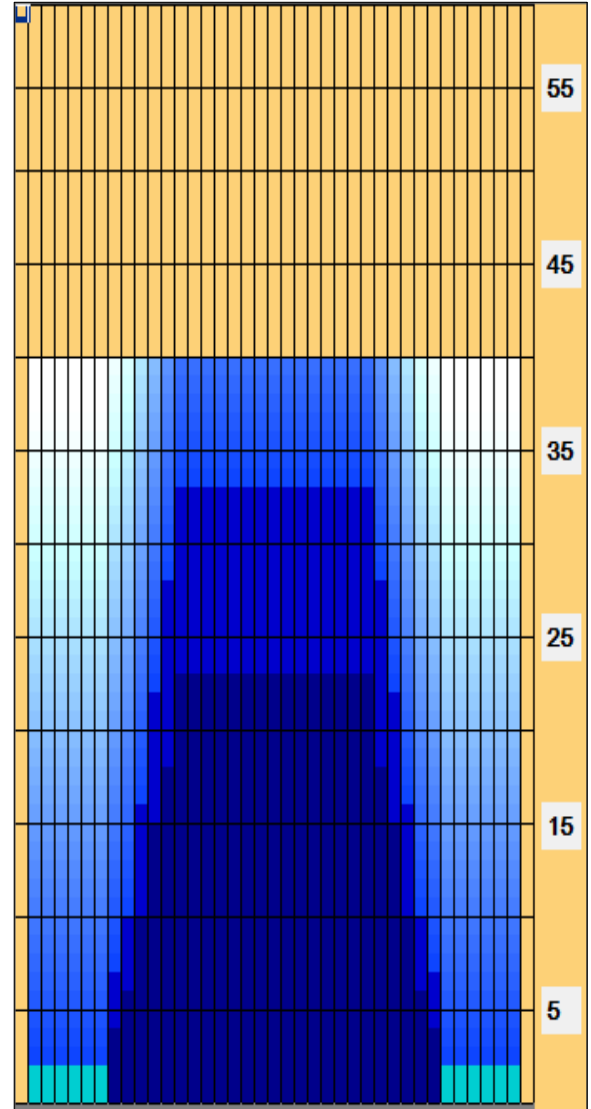
Reverse



Combined



Buff



Arrow Zone Ratios

Item	2-5L:16L-20	6-10L:16-20	11-15L:16L-20	16L-20:20-16R	16L-20:20-16R	20-16R:15-11R	20-16R:10-6R	20-16R:5-2R
ul Arrow	120	256	944	1040	1040	944	256	120
Zone Ratio	8.67	4.06	1.1	1	1	1.1	4.06	8.67

Track Zone Ratios

Item	3L-7L:18L-18R	8L-12L:18L-18R	13L-17L:18L-18R	18L-18R:17R-13R	18L-18R:12R-8R	18L-18R:7R-3R
Description	Outside Track:Middle	Middle Track:Middle	Inside Track:Middle	Middle: Inside Track	Middle:Middle Track	Middle:Outside Track
Track Zone Ratio	8.67	1.97	1	1	1.97	8.67

